

6-17-2010

The Troubadour, Issue 143 (June 17, 2010)

Cardinal Stritch University

Follow this and additional works at: <https://digitalcommons.stritch.edu/troubadour>

Recommended Citation

Cardinal Stritch University, "The Troubadour, Issue 143 (June 17, 2010)" (2010). *Troubadour*. 153.
<https://digitalcommons.stritch.edu/troubadour/153>

This Book is brought to you for free and open access by the Newsletters at Stritch Shares. It has been accepted for inclusion in Troubadour by an authorized administrator of Stritch Shares. For more information, please contact smbagley@stritch.edu.

THE TROUBADOUR

JUNE 17, 2010

ISSUE 143

ENROLLMENT SERVICES RESTRUCTURED; MESSER PROMOTED TO NEW ROLE

Stritch's Enrollment Services office has been restructured, and two director positions have been created to strengthen the University's recruitment efforts and the quality of services provided to students.



Kirk Messer

Kirk Messer, formerly director of admissions, has been promoted to director of student recruitment. He will continue to oversee both undergraduate and graduate admissions, in addition to overseeing the recruitment marketing and data entry functions of

Enrollment Services. A job description is also being developed for the position of director of advising and registration, which will be posted for applications within the next few weeks.

John Mueller, vice president of Enrollment Services, said that the changes provide the Enrollment Services team more leadership and developmental support, and a greater capacity to enhance services through improved collaboration and communication.

"Our long-term focus is on recruitment, so it's important that everyone in our department has the time and attention they need to be empowered and effective in our recruitment

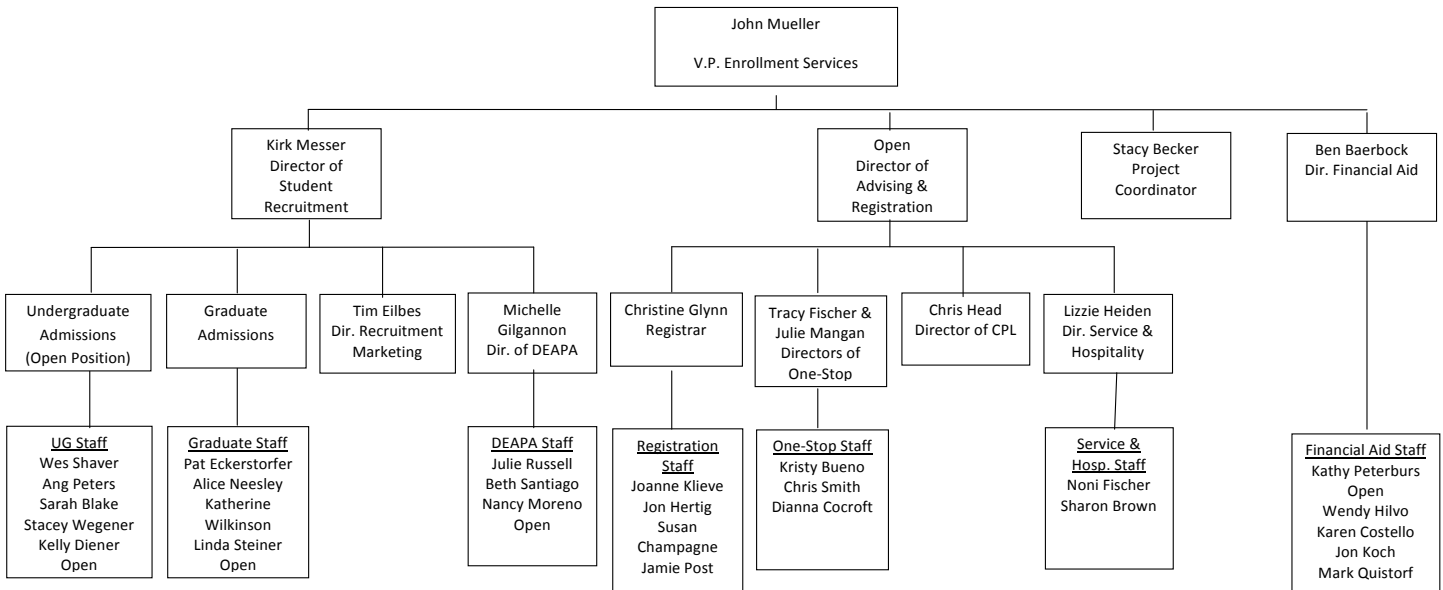
efforts," he said. "This structure ensures that our efforts are not diluted by an inability to access departmental leadership and get or share important information."

The director of advising and registration position will oversee what Mueller called the operational/service side of the department – these areas include Registration, One-Stop, Credit for Prior Learning, and Service and Hospitality. Financial Aid will continue to report directly to Mueller, as will Stacy Becker, who serves as project coordinator for the entire Enrollment Services area.

There will also be a continued emphasis on the close partnership between Enrollment Services and the Business Office, which Mueller said is critical to ensuring prompt disbursement of financial aid and implementation of streamlined systems and processes that meet the University's strategic goal to enhance the student experience.

"Personal attention and access are critical to the service of students, and we're confident that this reorganization helps our entire staff of 43 people get the personal attention and access they need to continue working effectively together in support of our mission to serve students," said Mueller.

An organizational chart reflecting the changes appears on the next page.



ADVANCEMENT REACHES \$1.1 MILLION IN GIFTS; ALUMNI BOARD GIVING AT 100%

The Advancement team and the Board of Trustees have announced that Stritch's 2009-10 Annual Fund has surpassed \$1.1 million raised so far this year. With seven weeks to go until July 31, the staff is working hard to raise as much money as possible to meet as many student and University needs as possible.

Signs of renewed optimism in the economy are reflected in the size and quantity of gifts made to this year's Annual Fund. In the last week alone, gifts of \$20,000 and \$50,000 we received from donors who, while they have given in the past, were not automatic renewals.

One gift was made by an alumna and her husband, who is an Emeritus member of the Board of Trustees. In addition, the success of the last Phonathon and a recent direct mail appeal have contributed to the total amount raised.

The members of Alumni Association Board of Directors announced at their planning retreat last weekend that they have achieved 100% participation in their support of the Annual Fund. The Advancement team thanks the members of the Board for their generous financial gifts, as well as their time and talent.

Members of the Stritch community can still make gifts to the Annual Fund until July 31. Donations can be directed to any area of the University and can be made in any size. All gifts make a difference. Consider an online donation by visiting www.stritch.edu/giving today.

FOOD SERVICES SEEKS CONTRIBUTIONS FOR TREE IN FANNING'S MEMORY

The Food Services staff and others at Stritch have initiated a collection to purchase and plant a tree in memory of Jason Fanning, former director of Food Services, who was killed in a car accident on Valentine's Day.

A collection basket has been placed in the Serra Hall cafeteria for the tree, which will be planted in the triangular plot of grass adjacent to the juncture of Serra Hall and Roger Bacon Hall, outside the kitchen. The group's goal is to plant the tree this fall and add a bench with a plaque bearing Fanning's name and the logo of Superman, a favorite of Fanning's.

For more information on how to contribute to the collection, contact Food Services.



VANHIMBERGEN ELECTED CHAIR OF CATHOLIC KNIGHTS/CATHOLIC FAMILY BOARD

Stritch Executive Vice President for Administration and Chief Financial Officer Tom VanHimbergen was elected chair of the Catholic Knights/Catholic Family board of directors at its annual strategic planning retreat on June 5.

He has served on the Catholic Knights board since 2004 and the executive, audit, finance and technology, investments and compensation committees over the past six years.

"Tom brings a wealth of knowledge and experience to this position" said President and CEO Bill O'Toole. "His 39 years of corporate and non-profit leadership make him an excellent choice to help lead the Catholic Knights/Catholic Family board of directors."

As board chair, VanHimbergen oversees the board's activities and responsibilities, and facilitates board and executive committee meetings. "I am extremely humbled to have been elected by my peers to this key leadership position," he said.

Catholic Knights/Catholic Family is a 142-year-old fraternal benefit society headquartered in Milwaukee. It recently completed a merger with Catholic Family Life Insurance, creating the second largest Catholic fraternal organization in the U.S., with 125,000 members and \$1.1 billion in assets.

THE TROUBADOUR

The Troubadour supports the overall mission, goals and objectives of Cardinal Stritch University, and is meant to serve as a communications tool for the campus community. If you have feedback or story ideas, please contact Public Relations at prdept@stritch.edu.

For complete information on University public relations, media relations and publications, please see the PR brochure, which is available in My Stritch by clicking on "Public Relations Information" in the "Other Employee Info Pages" folder under the "Employee Info" tab.



Looking for back issues of The Troubadour?

Back issues of The Troubadour can be found in MyStritch. After logging in, click the "Employee Info" tab and select "Troubadour" in the left-hand column. Issues are posted in descending order by date and have brief descriptions of content. Click on the link you wish to access.